

How to Count Family Size Procedure

For 2016-2017 ERSEA Process

Purpose

This chart will help you decide which household members to count in order to determine family size.

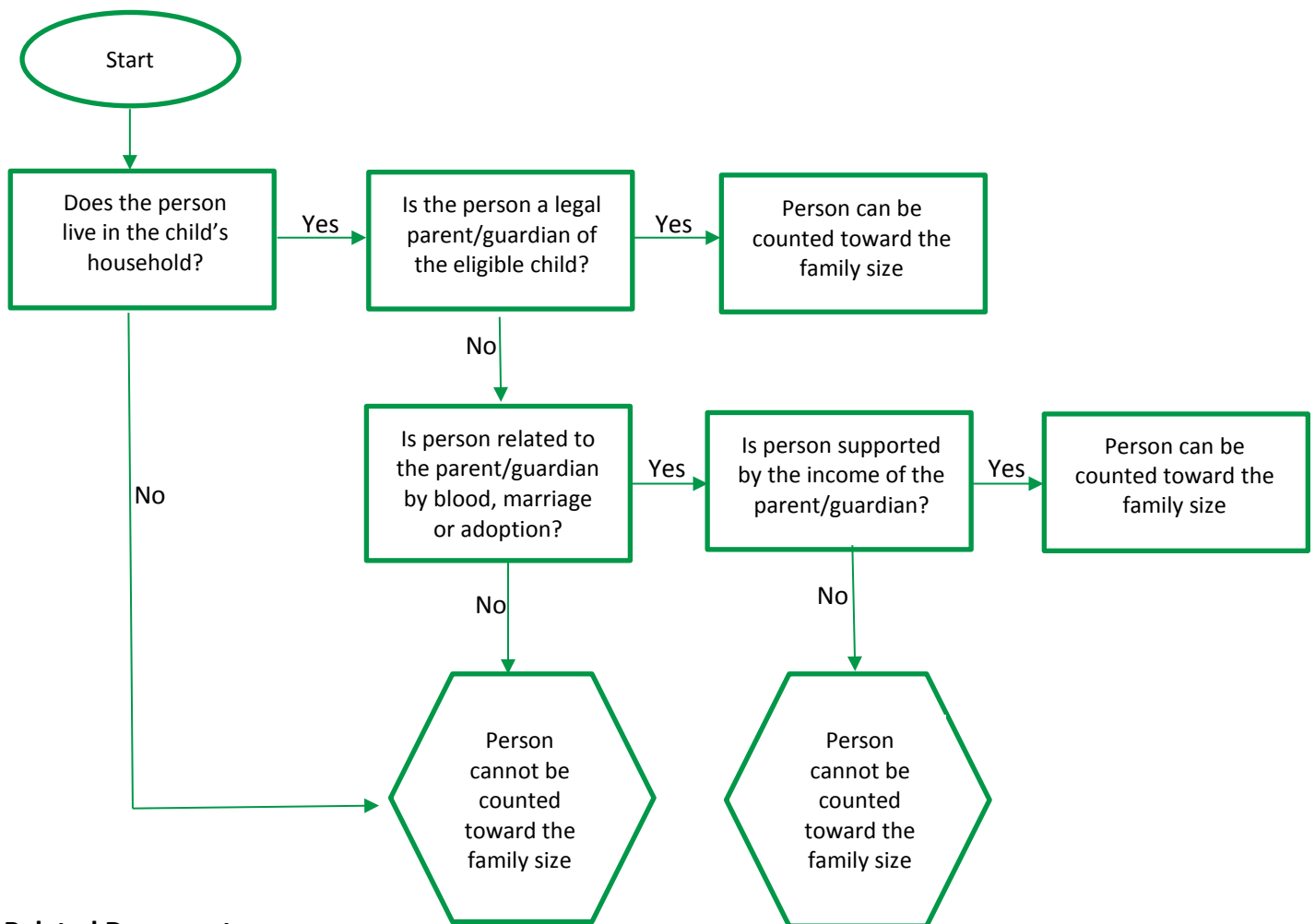
Who Gets Counted?

Family Size definition:

Family means all persons living in the same household who are supported by the income of the parent(s) or guardian(s) of the child applying to the program and are related to the parent(s) or guardian(s) by blood, marriage or adoption.

Procedure

Use the flow chart below to determine who gets counted in the Family Size:



Related Document

Eligibility Verification Procedure