

Site Support Teams A

EHS-CCP*
and
Tiered**

*Providing Support to
PSESD Subcontractors:*

Bates Tech. College *

Chief Leschi

Childhaven **

Encompass

Enumclaw SD **

Issaquah SD

Kent SD

MCFHC

Peninsula SD

PCHS

Tacoma CC *

Tacoma Day

Tacoma SD

Tahoma SD

The Lighthouse */**

Vashon Island SD

Team A — Preschool



Noelle Wilkins

Team Manager

Email: NWilkins@psed.org
Office: Pierce (253) 778-7715
King (425) 917-7715
Cell (253) 335-5638



Kathy Binkley

Family Engagement
Coach

Email: KBinkley@psed.org
Office: Pierce (253) 778-7731
King (425) 917-7731
Cell (253) 988-8460



Natalie Lampi

Health/Nutrition/Safety
Coach

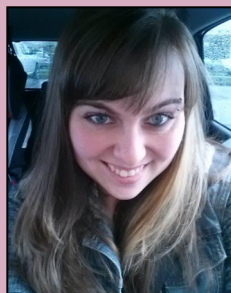
Email: NLampi@psed.org
Office: Pierce (253) 778-7864
King (425) 917-7864
Cell (240) 515-0551



**Michelle
Williams-Nelson**

Dual Language Learners
Coach

Email: MNelson@psed.org
Office: Pierce (253) 778-7788
King (425) 917-7788
Cell (206) 321-2453



Amy Alexander

Education Coach

Email: AAlexander@psed.org
Office: Pierce (253) 778-7760
King (425) 917-7760
Cell (206) 949-5631

Subcontractors:

Bates Technical College
Encompass
Enumclaw School District
Kent School District
MCFHC
Peninsula School District



April Bowen

Education Coach

Email: ABowen@psed.org
Office: Pierce (253) 778-7714
King (425) 917-7714
Cell (253) 330-1197

Subcontractors:

Chief Leschi
Issaquah School District
PCHS
Tacoma Community College

Tacoma Day
Tacoma School District
Tahoma School District
Vashon Island School District



Teresa Judie

Health/Nutrition Aide

Email: TeJudie@psed.org
Office: Pierce (253) 778-7890
King (425) 917-7890
Cell (253) 222-8576



*Early Head Start Child Care Partnerships



Decca Calloway

Team Manager

Email: DCalloway@psed.org
Office: Pierce (253) 778-7951
King (425) 917-7951
Cell (678) 913-3729



Eduvina Reveles

Health/Nutrition/Safety
Coach

Email: Erevelesl@psed.org
Office: Pierce (253) 778-7729
King (425) 917-7729
Cell (253) 592-3674



Carrie Parman

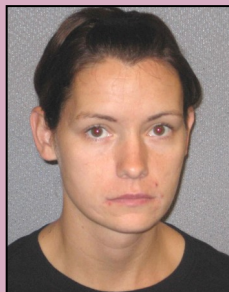
Family Engagement
Coach

Email: CParman@psed.org
Office: Pierce (253) 778-7722
King (425) 917-7722
Cell (253) 219-5119

Education Coach

Email: @psed.org
Office: Pierce (253) 778-7952
King (425) 917-7952
Cell ()

**Tiered Support Team — Preschool



Amanda Kirk-Woodbury

Team Manager

Email: akirk-woodbury@psed.org
Office: King (425) 917-7705
Pierce (253) 778-7705
Cell (206) 383-6687



Traci Causey

Health/Nutrition/Safety
Coach

Email: TCausey@psed.org
Office: King (425) 917-7782
Pierce (253) 778-7782
Cell (425) 686-9553



Antionette Bunkasem

Family Engagement
Coach

Email: ABunkasem@psed.org
Office: King (425) 917-7894
Pierce (253) 778-7894
Cell (253) 736-4638



Mary Beth Edmondson

Education
Coach

Email: MEdmondson@psed.org
Office: King (425) 917-7752
Pierce (253) 778-7752
Cell (253) 670-9551

Sites Supported:

- ◆ *Childhaven*
- ◆ *The Lighthouse*

Mental Health and Disabilities Consultants



Carrie Morris

Disabilities
Consultant

Email: CaMorris@psed.org
Office: Pierce (253) 778-7750
King (425) 917-7750
Cell (206) 214-6466

Subcontractors:

MCFHC
The Lighthouse



Ardene Niemer

Disabilities
Consultant

Email: ANiemer@psed.org
Office: Pierce (253) 778-7869
King (425) 917-7869
Cell (206) 499-1565

Subcontractors:

Bates Technical College
Tacoma Community College



Kristin Wells

Mental Health
Consultant

Email: KWells@psed.org
Office: Pierce (253) 778-7765
King (425) 917-7765
Cell (425) 879-5065

Subcontractors:

The Lighthouse



Nicole Johanson

Mental Health
Consultant

Email: NJohanson@psed.org
Office: Pierce (253) 778-7956
King (425) 917-7956
Cell (253) 831-0335

Subcontractors:

Bates Technical College
MCFHC
Tacoma Community College

NOTE: Mental Health and Disabilities Consultants will only support Head Start and Early Head Start classrooms unless otherwise noted. Disabilities Consultants' support for ECEAP subcontractors is on an as-needed basis/limited basis and can be accessed through a Team Manager.