

Site  
Support  
Teams  
A  
EHS-CCP\*  
and  
Tiered\*\*

*Providing Support to  
PSESD Subcontractors:*

- Bates Tech. College \*
- Chief Leschi
- Childhaven \*\*
- Encompass
- Enumclaw SD \*\*
- Issaquah SD
- Kent SD
- MCFHC
- Peninsula SD
- PCHS
- Tacoma CC \*
- Tacoma Day
- Tacoma SD
- Tahoma SD
- The Lighthouse \*/\*\*
- Vashon Island SD



Team A — Preschool



**Noelle Wilkins**

Team Manager

Email: [NWilkins@psed.org](mailto:NWilkins@psed.org)  
Office: Pierce (253) 778-7715  
King (425) 917-7715  
Cell (253) 335-5638



**Kathy Binkley**

Family Engagement  
Coach

Email: [KBinkley@psed.org](mailto:KBinkley@psed.org)  
Office: Pierce (253) 778-7731  
King (425) 917-7731  
Cell (253) 988-8460

**Nasteha Muse**

Health/Nutrition/Safety  
Coach (Interim)

Email: [NMuse@psed.org](mailto:NMuse@psed.org)  
Office: Pierce (253) 778-7747  
King (425) 917-7747  
Cell (206) 913-1023

**Mary Eddy**

Health/Nutrition/Safety  
Coach (Interim)

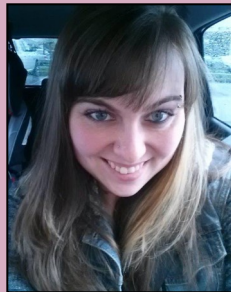
Email: [MEddy@psed.org](mailto:MEddy@psed.org)  
Office: Pierce (253) 778-7871  
King (425) 917-7871  
Cell (360) 628-7359



**Michelle  
Williams-Nelson**

Dual Language Learners  
Coach

Email: [MNelson@psed.org](mailto:MNelson@psed.org)  
Office: Pierce (253) 778-7788  
King (425) 917-7788  
Cell (206) 321-2453



**Amy Alexander**

Education Coach

Email: [AAlexander@psed.org](mailto:AAlexander@psed.org)  
Office: Pierce (253) 778-7760  
King (425) 917-7760  
Cell (206) 949-5631

**Subcontractors:**

Bates Technical College  
Encompass  
Enumclaw School District  
Kent School District  
MCFHC  
Peninsula School District



**April Bowen**

Education Coach

Email: [ABowen@psed.org](mailto:ABowen@psed.org)  
Office: Pierce (253) 778-7714  
King (425) 917-7714  
Cell (253) 330-1197

**Subcontractors:**

Chief Leschi  
Issaquah School District  
PCHS  
Tacoma Community College

Tacoma Day  
Tacoma School District  
Tahoma School District  
Vashon Island School District



**Teresa Judie**

Health/Nutrition Aide

Email: [TeJudie@psed.org](mailto:TeJudie@psed.org)  
Office: Pierce (253) 778-7890  
King (425) 917-7890  
Cell (253) 222-8576

## \*Early Head Start Child Care Partnerships



### **Decca Calloway**

Team Manager

Email: [DCalloway@psed.org](mailto:DCalloway@psed.org)  
Office: Pierce (253) 778-7951  
King (425) 917-7951  
Cell (678) 913-3729



### **Denetta Uzzell**

Health/Nutrition/Safety  
Coach

Email: [DUzzell@psed.org](mailto:DUzzell@psed.org)  
Office: Pierce (253) 778-7729  
King (425) 917-7729  
Cell (253) 223-9909



### **Carrie Parman**

Family Engagement  
Coach

Email: [CParman@psed.org](mailto:CParman@psed.org)  
Office: Pierce (253) 778-7722  
King (425) 917-7722  
Cell (253) 219-5119



### **Emily Stephens**

Education Coach

Email: [EStephens@psed.org](mailto:EStephens@psed.org)  
Office: Pierce (253) 778-7952  
King (425) 917-7952  
Cell (425) 239-6039

## \*\*Tiered Support Team — Preschool



### **Talena Dixon**

Team Manager (Interim)

Email: [TDixon@psed.org](mailto:TDixon@psed.org)  
Office: King (425) 917-7872  
Pierce (253) 778-7872  
Cell (206) 909-7317



### **Traci Causey**

Health/Nutrition/Safety  
Coach

Email: [TCausey@psed.org](mailto:TCausey@psed.org)  
Office: King (425) 917-7782  
Pierce (253) 778-7782



### **Antionette Bunkasem**

Family Engagement  
Coach

Email: [ABunkasem@psed.org](mailto:ABunkasem@psed.org)  
Office: King (425) 917-7894  
Pierce (253) 778-7894  
Cell (253) 736-4638



### **Mary Beth Edmondson**

Education  
Coach

Email: [MEdmondson@psed.org](mailto:MEdmondson@psed.org)  
Office: King (425) 917-7752  
Pierce (253) 778-7752  
Cell (253) 670-9551

### **Sites Supported:**

- ◆ *Childhaven*
- ◆ *The Lighthouse*

# Mental Health and Disabilities Consultants



## **Carrie Morris**

Disabilities  
Consultant

Email: CaMorris@psed.org  
Office: Pierce (253) 778-7750  
King (425) 917-7750  
Cell (206) 214-6466

### **Subcontractors:**

MCFHC  
The Lighthouse



## **Ardene Niemer**

Disabilities  
Consultant

Email: ANiemer@psed.org  
Office: Pierce (253) 778-7869  
King (425) 917-7869  
Cell (206) 499-1565

### **Subcontractors:**

Bates Technical College  
Tacoma Community College



## **Kristin Wells**

Mental Health  
Consultant

Email: KWells@psed.org  
Office: Pierce (253) 778-7765  
King (425) 917-7765  
Cell (425) 879-5065

### **Subcontractors:**

The Lighthouse



## **Nicole Johanson**

Mental Health  
Consultant

Email: NJohanson@psed.org  
Office: Pierce (253) 778-7956  
King (425) 917-7956  
Cell (253) 831-0335

### **Subcontractors:**

Bates Technical College  
MCFHC  
Tacoma Community College

***NOTE: Mental Health and Disabilities Consultants will only support Head Start and Early Head Start classrooms unless otherwise noted. Disabilities Consultants' support for ECEAP subcontractors is on an as-needed basis/limited basis and can be accessed through a Team Manager.***