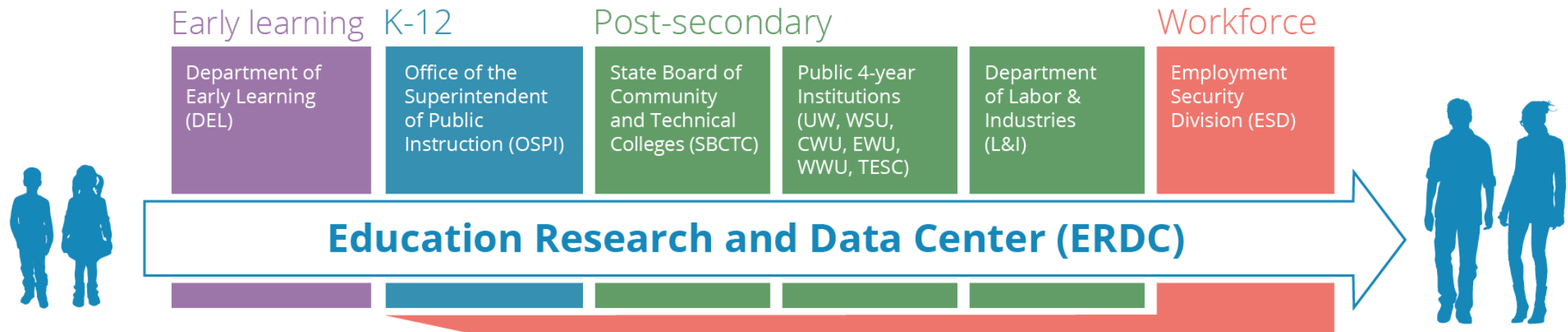


Early Learning Feedback Report

And Research Briefs

About the ERDC



Early Learning Research

- ERDC partners with the DEL and OSPI
 - Match ECEAP participants and kindergarteners
 - Assess kindergarten readiness of former ECEAP students

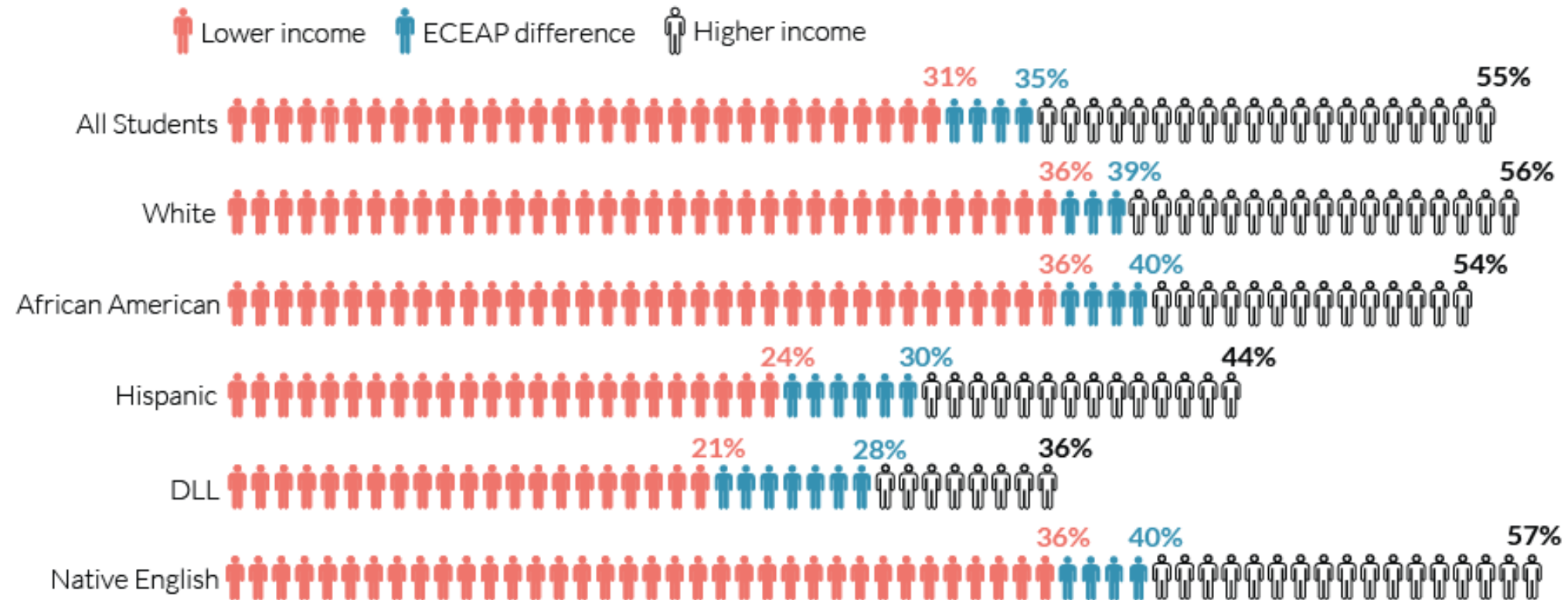
Cohorts

- Lower income cohort:
 - Eligible for FRPL
 - Had at least one former ECEAP student at same school
 - **Note: This includes Head Start students**
- Higher income cohort:
 - Not eligible for FRPL
- Statewide ECEAP cohort:
 - Attended ECEAP site for 6 months or more
 - Enrolled in Kindergarten the following Fall
 - Assessed on WaKids

Outcome Measure

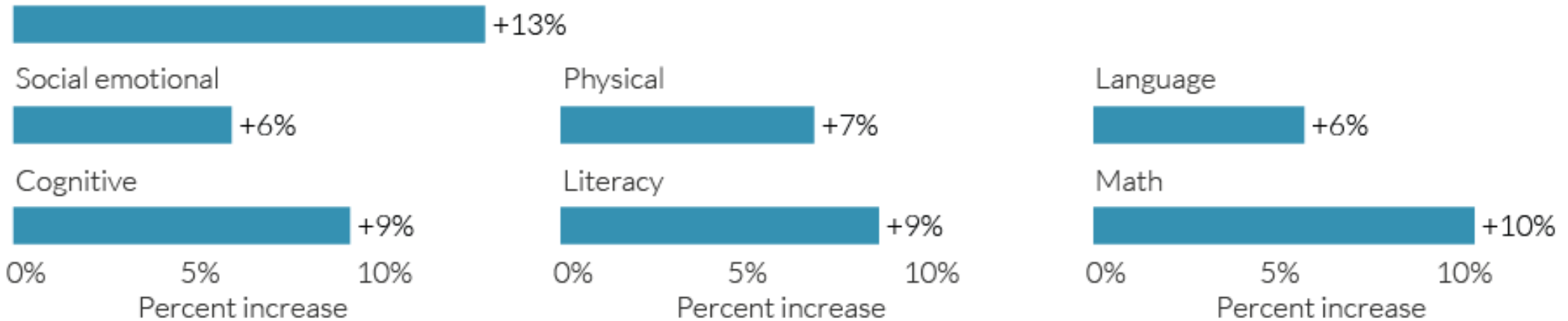
- Kindergarten readiness
 - Measured by WaKIDS administered in Fall of kindergarten year
 - Demographics are based on WaKIDS

Statewide Research Brief



Statewide Research Brief

6/6 domains



Note: correlation does not imply causation. We should be careful with our language.

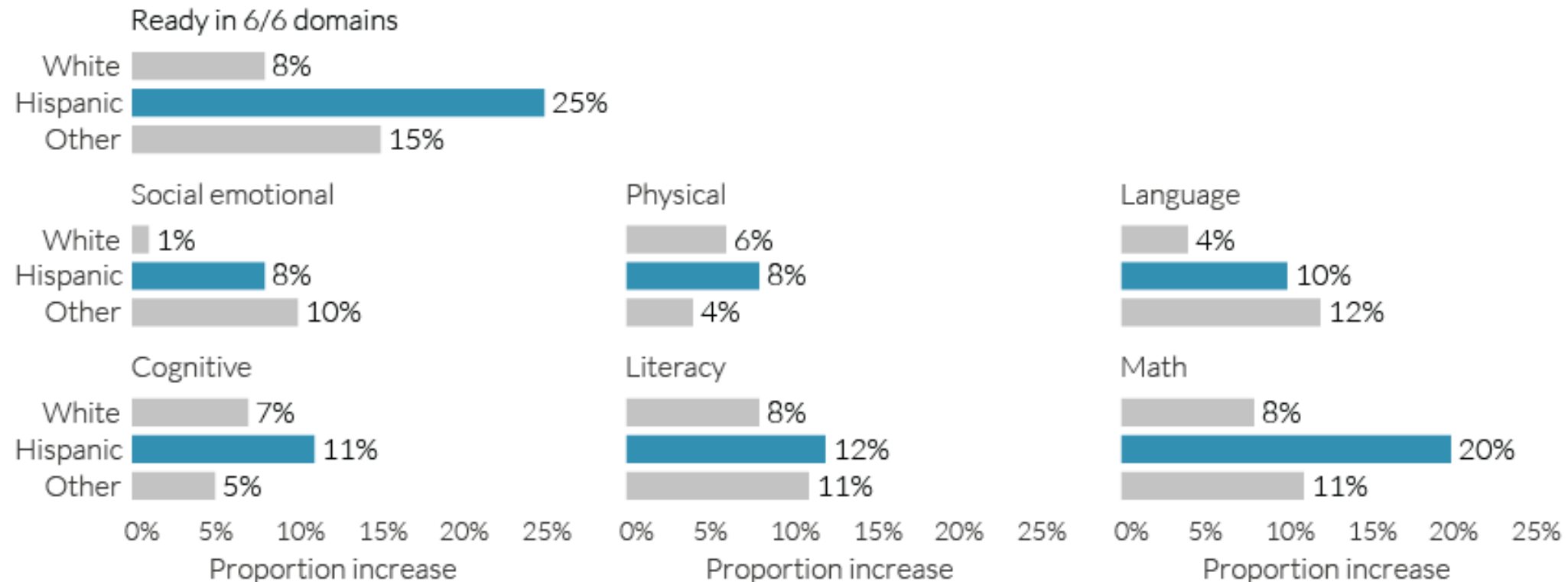
In other words....

You are making a difference!

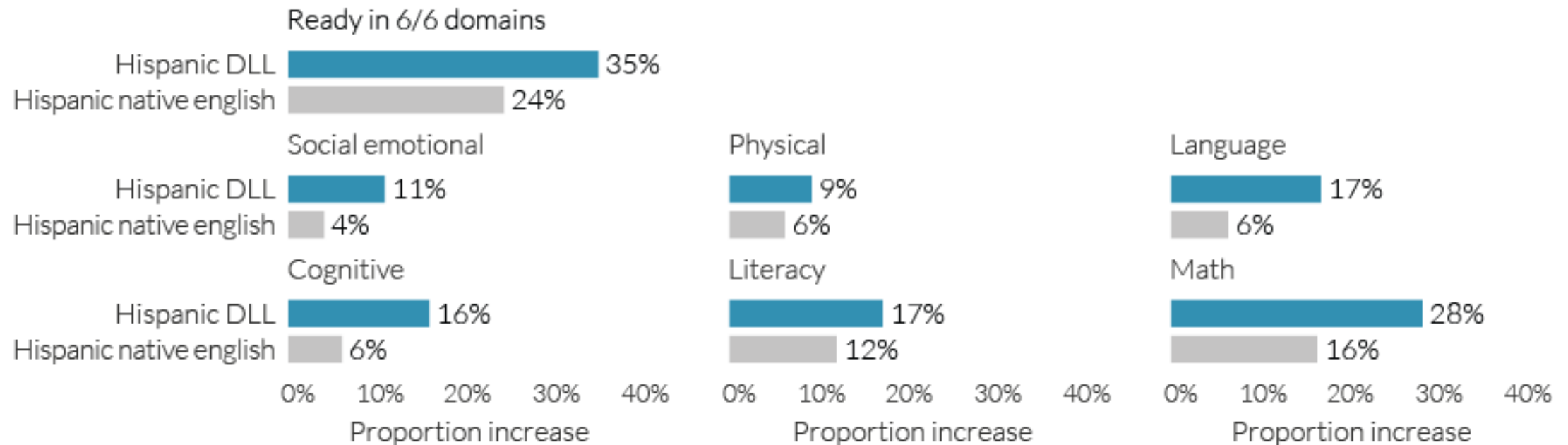
Especially for Hispanic and Asian children

Especially for dual language learners

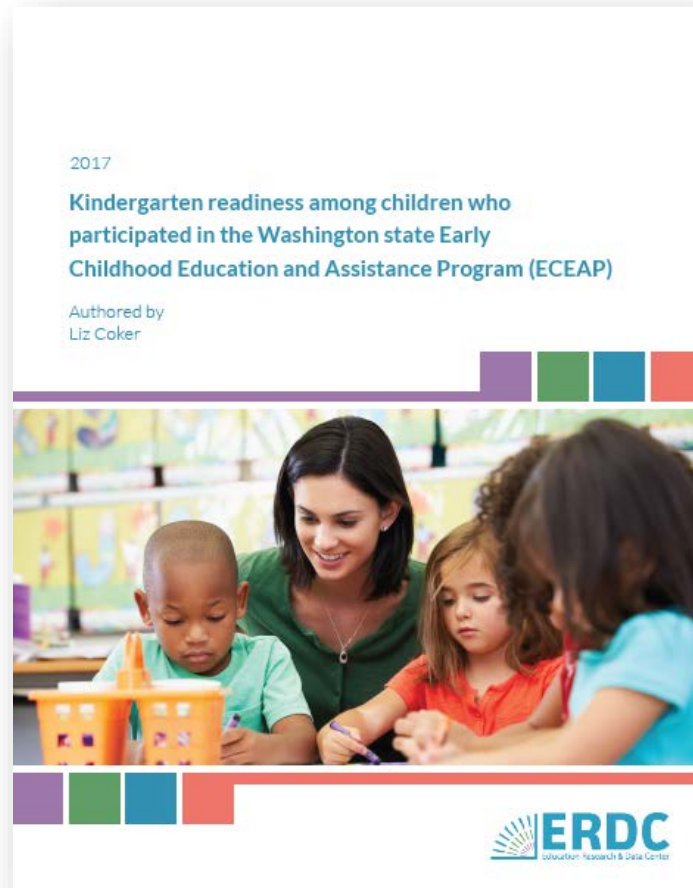
Hispanic Research Brief



Hispanic Research Brief

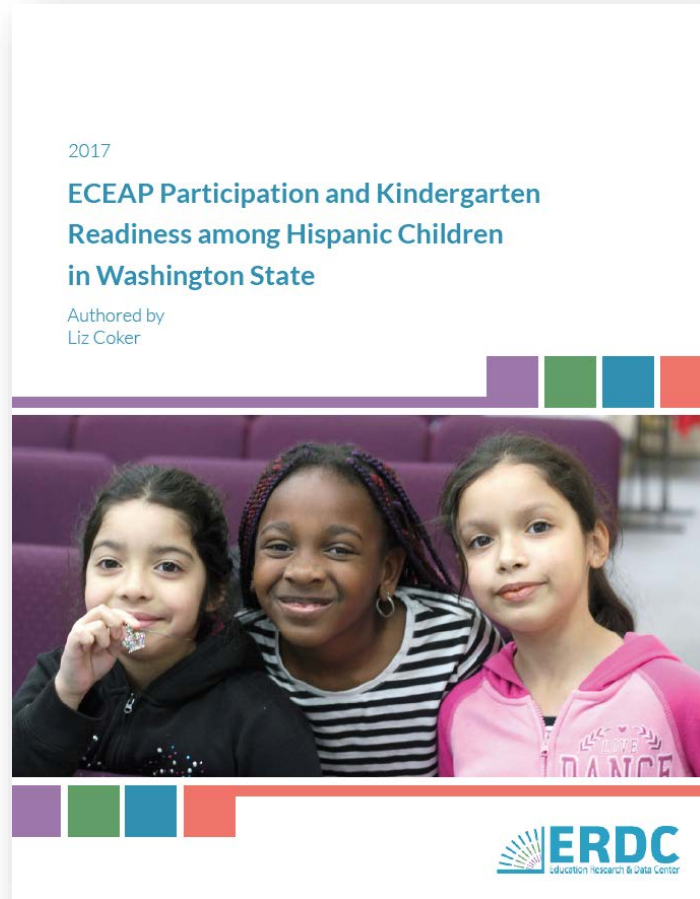


Statewide Research Brief



- Explores demographic characteristics of ECEAP students statewide.
- Explores kindergarten readiness of ECEAP students compared with lower and higher income students.

Statewide Research Brief



- Explores demographic characteristics of Hispanic and dual language ECEAP students.
- Explores kindergarten readiness of Hispanic and dual language ECEAP students.

Early Learning Feedback Report

Privacy

- We comply with state and federal guidelines to protect student privacy.
- Not every site can be displayed.
 - Sites with fewer than 10 students simply are not displayed, except in groups (contractors).
 - Subgroups with fewer than 10 students are not displayed.